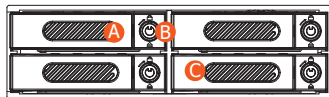


RAIDON

iR4300-S2 快速安裝導引

產品示意圖與配件表

前視圖



背視圖



- A 硬碟托盤手把
- B 硬碟卡榫按鍵
- C 硬碟讀寫燈
- D 風扇
- E 風扇連接埠
- F 蜂鳴器
- G RAID 模式
- H 重置鈕
- I 外引訊號
- J SATA 連接埠
- K SATA 15Pin 電源輸入埠

打開包裝外盒後，包裝內容應包含下列組件：

產品配件表

iR4300-S2 主體 x1



快速安裝導引 x1



螺絲及鑰匙



內接SATA連接線 x1

請先確認相關配件與產品本身是否有受損或是缺少配件，若有任何疑問，請與您的經銷商或業務人員聯絡。

V1.0 (Mar. 2017)

1

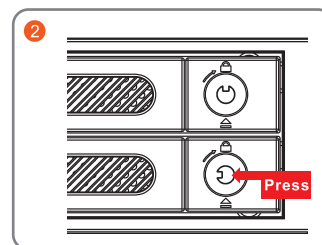
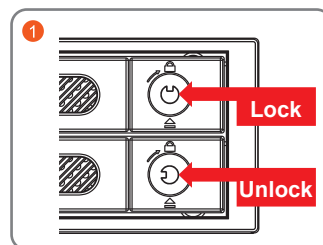
燈號說明

狀態	硬碟燈號		蜂鳴器	備註
	藍燈	紅燈		
開機	閃爍→恆亮	---	1長音 2短音	右上槽紫燈閃一下
未裝入 4 顆硬碟	---	---	---	開機時 LED 藍燈閃一下
RAID 毀損	---	---	1長音 2短音 (持續, 間隔1秒)	RAID5 移除一顆硬碟
硬碟故障	閃爍	恆亮	1長音 2短音 (持續, 間隔1秒)	LED 紫燈 RAID5 單一顆硬碟 不良時
資料存取	閃爍	---	---	
閒置	恆亮	---	---	
資料重建 - 來源碟	閃爍	---	---	
資料重建 - 資料碟	閃爍	閃爍	---	LED 交互閃爍
風扇故障	---	---	1長音 (持續, 間隔1秒)	
過熱	---	---	2短音 (持續, 間隔1秒)	溫度超過 50°C

硬體安裝

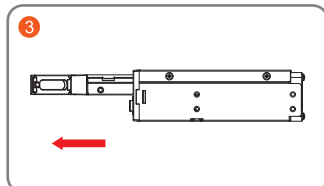
請參照下列步驟，完成 iR4300-S2 的硬體安裝：

1. 解開硬碟托盤鎖。
2. 按下硬碟卡榫按鍵。

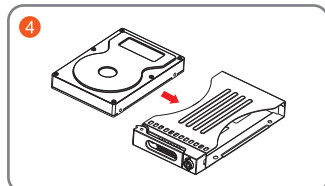


2

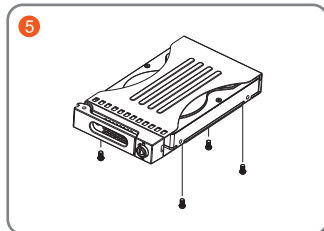
3. 抽出硬碟托盤組。



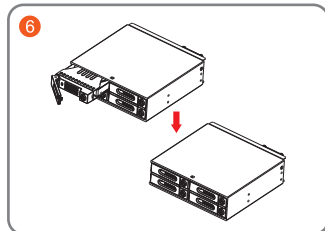
4. 將 2.5 吋硬碟安裝在硬碟托盤上。



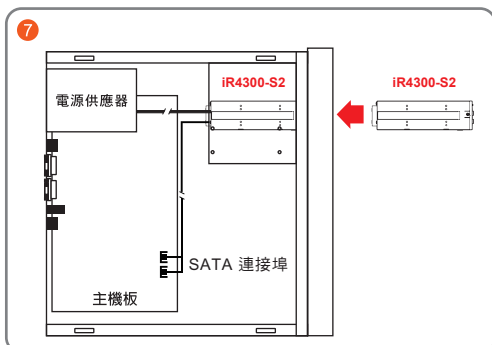
5. 鎖上附件包內的螺絲。



6. 將硬碟托盤安裝回 iR4300-S2 系列產品。



7. 將主體安裝於電腦機殼上的 CD-ROM 位置，請使用配件零件包的螺絲固定，並連接產品所附的連接線。



8. iR4300-S2 的 RAID 出廠預設為 JBOD。第一次使用請在 JBOD 的狀態下開啟電腦的電源開關，待蜂鳴器傳出 1 長音 2 短音時，即完成機器安裝設定。
9. 機器安裝設定完成後，即可依需求設定 RAID 模式，請參考「產品使用注意事項/3. 切換 RAID 設定的標準程序」，做 RAID 模式切換設定。

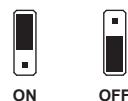
3

RAID 與蜂鳴器切換設定

RAID 設定：



蜂鳴器設定：



產品使用注意事項

1. 若想到較佳的使用效能與選購硬碟的便利性，建議使用規格及廠牌相同的 2.5 吋硬碟。
2. 切換 RAID 設定的標準程序：
步驟 1：在關機狀態下移除 iR4300-S2 的 SATA 連接線，再將 iR4300-S2 背板上的「RAID 模式」調至 JBOD。
步驟 2：壓住「重置鈕」，再開啟電腦的電源開關，待蜂鳴器發出「1 長音 2 短音」後鬆開，再關閉電腦。
步驟 3：將 iR4300-S2 背板上的「RAID 模式」調至您所需要的模式。
步驟 4：壓住「重置鈕」，再開啟電腦的電源開關，待蜂鳴器發出「1 長音 2 短音」後鬆開，再關閉電腦。
步驟 5：啟動電腦，待蜂鳴器發出「1 長音 2 短音」後，再以 SATA 連接線連結 iR4300-S2 與主機板。您已經改變、並重新設定了 iR4300-S2 的 RAID 模式。
3. RAID 模式一旦設定完成，若要進行切換，因切換過程中將會清除硬碟中的資料，請務必先將硬碟中的資料另行備份後再行切換。
4. 請確保使用的硬碟是不含壞軌的，以避免當其中一顆硬碟發生故障時，可能導致系統當機或所有資料遺失。
5. 當您需要關閉或移除 iR4300-S2 時，務必透過您所操作的作業系統中執行硬碟安全移除後，方可進行電源關閉的動作。
6. 當系統運作時，請勿任意移除任何一顆硬碟，以免導致資料遺失。
7. 強烈建議除了使用 iR4300-S2 的資料儲存功能外，請針對重要資料備份到另一個儲存裝置上或遠端備份，雙重備份您重要的資料。若您儲存在 iR4300-S2 的資料損毀或遺失，RAIDON 將不負任何的責任。

感謝您使用 銳銳科技股份有限公司 的產品。本手冊裡的資訊在出版前雖然已經被詳細確認，但實際產品規格將以出貨時為準；任何的產品規格或相關資訊更新，請您直接上 www.RAIDON.com.tw 網站查詢，或是直接與您的業務聯絡窗口聯繫，本公司將不另行通知。

如果您對 銳銳科技 的產品有任何疑問，或是想獲得最新產品訊息、使用手冊或初體，請您聯絡 supporting@raidon.com.tw，我們將儘速回覆您。

本說明相關產品內容歸 銳銳科技股份有限公司 版權所有

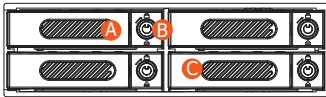
4

RAIDON

iR4300-S2 Quick Setup Guide

Product Illustration and Parts List

Front View



Rear View



- A** HDD/SSD Tray & Tray Handle
- B** Tray Key Lock & Push-Open Button
- C** HDD/SSD Access LED
- D** Cooling Fan
- E** 3-pin Fan Connector
- F** Buzzer
- G** RAID Switch
- H** Hidden Reset Button
- I** Monitoring Signal Connector
- J** SATA Port
- K** Two 15-pin Power Connectors

The following items should be inside the package upon opening:

Product Parts List

iR4300-S2 Device x1



Quick Setup Guide x1



Screws & Key



SATA Cable x1

Please check the included parts and the product itself for any damage or missing parts. If you have any questions, please contact the retailer or sales representative.

V1.0 (Mar. 2017)

1

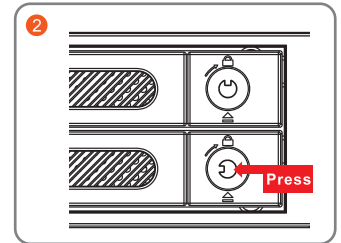
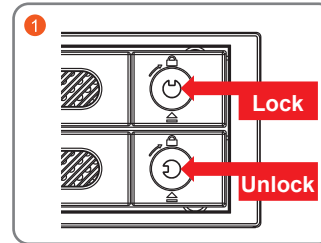
LED Indication

Constant	Front LED		Buzzer	Note
	Blue	Red		
Power ON	Flashing→Constant	---	One 1-Long + 2-Short Beep	All HDD Access LEDs to flash a short purple light
No HDD	---	---	---	All HDD Access LEDs to flash a short blue light
RAID Failed	---	---	To continue 1-Long+2-Short Beep with 1 second interval	To extract one HDD/SSD at RAID 5 mode
Disk Failed	Flashing	Constant	To continue 1-Long+2-Short Beep with 1 second interval	The defective HDD/SSD to show constant purple light
Read-Write, Access	Flashing	---	---	
Disk Idle	Constant	---	---	
Rebuilding - Source	Flashing	---	---	
Rebuilding - Target	Flashing	Flashing	---	
Fan Failed	---	---	To continue 1-Long Beep with 1 second interval	
Over Temp	---	---	To continue 2-Short Beep with 1 second interval	Over 50°C

Hardware Installation

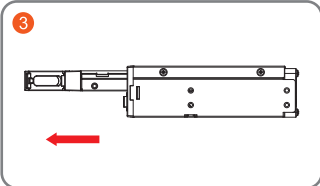
Please follow the following instructions to complete installation:

1. Unlock HDD/SSD Tray Key Lock.
2. Press Push-open Button to pull Tray Handles.

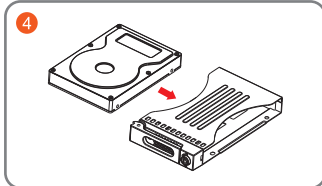


2

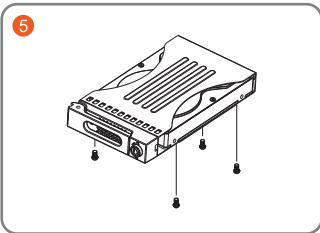
3. Extract HDD/SSD Trays.



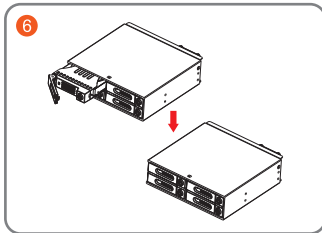
4. Install a 2.5" HDD/SSD onto Tray.



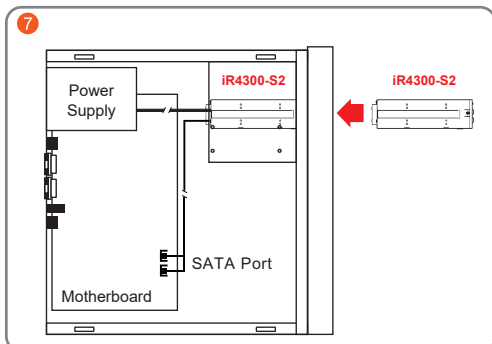
5. Get 4 screws from Accessory Kit and screw and fasten them into the right positions.



6. Insert all 4 HDD/SSD Trays your iR4300-S2.



7. Install iR4300-S2 into one CD-ROM bay with screws from Accessory Kit. Then properly connect SATA Cable and 15-pin Power Supply Cable (from your PC system) to it.

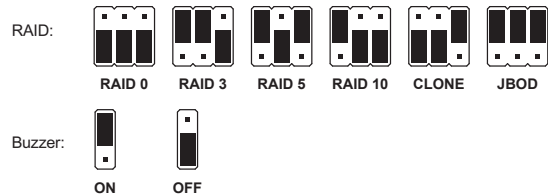


8. The default setting at iR4300-S2 is JBOD mode. At your first time use of it, please turn on your PC with JBOD mode. You could then start using your iR4300-S2 after hearing one 1-Long+2-Short Beep.

9. While your iR4300-S2 is ready for use, please refer to the third instruction in Chapter "Precaution" at Page-4 to set up the RAID mode you want to use.

3

RAID Mode and Buzzer Settings



Precautions

1. iR4300-S2 allows you to use two HDDs/SSDs from two different manufacturers. However, for a better efficiency, we would recommend you to use the same HDD/SSD product from the same manufacturer.
2. Please ensure that your two HDDs/SSDs are both good products, otherwise, they may damage your personal data.
3. The Standard Procedure to Switch RAID Setting:
 - Step-I: Turn off system power, disconnect SATA Cable, switch RAID mode to JBOD mode at backplate.
 - Step-II: Press and hold the Reset Button, turn on system power and release the Reset Button after one 1-Long+2-Short beep. Please turn system back to off.
 - Step-III: Change JBOD mode to the RAID mode you want to use.
 - Step-IV: Repeat Step-II Instruction.
 - Step-V: Turn on system power again, after hearing one 1-Long+2-Short beeps, connect SATA Cable to your iR4300-S2. You have successfully changed RAID mode, and you could use it now.
4. There is a WARNING to you: Since your personal data will be deleted during RAID mode change, once you decide to change RAID mode setting, please always keep all your personal data with a safe copy before doing that change.
5. Please make sure you are safely to exit your iR4300-S2 from Window OS before removing it or power it off.
6. Please study carefully and fully understand the restriction at each RAID mode, and strictly follow it to extract HDD under each RAID.
7. We strongly recommend our users to always keep personal data with a safe copy while using iR4300-S2. And RAIDON will not be responsible for any data loss by your improper use of RAID or mistake in using it.

RAIDON reserves the right to revise all the information in this manual without further notice.

Copyright © RAIDON TECHNOLOGY, INC. All rights reserved.

4